

7.9 GFE LIABILITY



ENABLING OBJECTIVES

- DESCRIBE the qualifications and capabilities of civilian Gas Free personnel.
- DESCRIBE the qualifications and capabilities of DON Gas Free personnel.
- DESCRIBE the authority of a shipboard GFE to initially certify/recertify spaces (IMA).
- DESCRIBE the authority of a shipboard GFE & GFEPPO recertify spaces, prior cert by civilian.



ENABLING OBJECTIVES

- DESCRIBE the procedure to certify shipboard spaces inside U.S. territorial waters for military and civilian dual occupancy.
- DESCRIBE the responsibilities of the CO and GFE with regard to notification of contractors to provide GFE services.
- DESCRIBE the procedure to certify shipboard spaces outside U.S. territorial waters for civilian occupancy.



REFERENCES :

- (a) 29 CFR 1915, OSHA Safety and Health Standards for Shipyard Employment
- (b) NSTM Chapter 074, volume 3, section 18



LIABILITY TOPICS



**CIVILIAN GFE
PERSONNEL**



**SHORE/SHIP
GFE
PERSONNEL**

**LIABILITY
INSIDE/OUTSIDE
TERRITORIAL
WATERS**



CHAINS OF COMMAND



CIVILIAN:

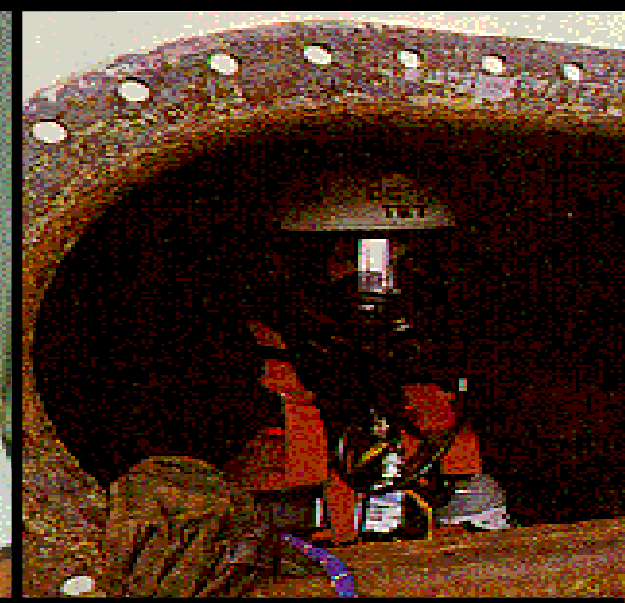
MARINE CHEMIST

INDUSTRIAL HYGIENIST

COMPETENT PERSON



CIVILIAN GFE PERSONNEL



Marine Chemist

Industrial Hygenist

Competent Person

Shipyard Gas Free Service

Assistant to Marine Chemist

**Follow Marine Chemist
Instructions**

**Degree in Organic/
Marine Chemistry
& NFPA Certified**

BS in Industrial Engineering

**No Degree Required
Authorized by
29CFR1915.7**

Program Administrator

Safety Inspector

Perform Most GF Tests



COMPETENT PERSON

- **USE & INTERPRET READINGS FROM GAS FREE EQUIPMENT**
 - **BE FAMILIAR WITH SHIPBOARD COMPARTMENTATION**
 - **PERFORM TESTS AND LOG RESULTS**
 - **UNDERSTAND MEANINGS OF DESIGNATIONS ON CERTIFICATES**

CHAINS OF COMMAND



DEPT OF THE NAVY:

SHORE MARITIME GFE

SHORE NON-MARITIME GFE

SHORE MARITIME GFET





Department of the Navy

SHORE MARITIME GFE PERSONNEL

Shore Maritime

**Shore Non-Maritime
GFE**

**Shore Maritime
GFET**

**BS in Physical / Life
Sciences or Engineering
or 3 Years Experience**

**3 Years Experience in Safety,
Fire Prevention, & Industrial
Safety**

You ! Certified GFE

Naval Shipyard, SIMA,
Non- Maritime Shore
Activities, Ships Afloat

Naval Shipyard, SIMA
Non-Maritime Shore Activities
No Services on Ships Afloat
Unless Trained for Specific Job

Shipboard GFE
Under SMGFE Supervision
May GF for SIMA /Gov't
Employees at Shipyard

CHAINS OF COMMAND

SHIPBOARD:

GFE

GFEA

GFPEO



SHIPBOARD GFET

GFE



Any Space Test

Including:

- **Confined Spaces w/ Toxins / Flammables**
- **IDLH Spaces (w/ CO's Permission)**
- **Tank Cleaning, Confined Space Painting**
- **Inerting, Pressing Up**

GFEA



Any Space Test Delegated by GFE

Same as GFE if Specified in Designation Letter Signed by CO

GFEPOs



Routine Space Tests as Delegated by GFE

Must be Experienced, Qual'd, Specified in CO's Letter

- **No Spaces w/ Toxic / Flammable Materials**
- **No CHT, Fuel, IDLH Spaces**
- **No Tank Cleaning, Confined Space Painting**
- **No Inerting, Pressing Up**

SHIPBOARD GFE SERVICES FOR CIVILIANS



- **NO LEGAL PROVISIONS**
 - ***EXCEPTIONS:***
 - (1) EXTREME EMERGENCY***
 - (2) INCREASED POTENTIAL LIABILITY***
- **REQUIRES CO AUTHORIZATION**
- **GFE MUST PERFORM SERVICES**

CIVILIAN GAS FREE SERVICES FOR SHIPBOARD PERSONNEL



INSIDE TERRITORIAL WATERS

- **Marine Chemist Or Competent Person May Certify for SHIP'S FORCE**
ONLY IF Ship's Force Personnel are **PERFORMING QA ON CONTRACTOR WORK**
(Ship's Force GFE TEST is CO's OPTION in this Case)



DUAL OCCUPANCY (INSIDE TERRITORIAL WATERS)

- ↻ BOTH SHIPBOARD AND CONTRACTOR PERSONNEL IN SPACE
- ↻ BOTH GFE AND CONTRACTOR REP MUST GAS FREE THE SPACE
- ↻ GFE WILL INFORM CONTRACTOR REP OF FINDINGS
- ↻ CONTRACTOR **SHALL BE INFORMED** THAT HE RETAINS LEGAL OBLIGATION FOR SAFETY OF CONTRACTOR PERSONNEL



OUTSIDE U.S. TERRITORIAL WATERS



**Shore Maritime
GFE**

Competent Person

Shipboard GFE

**FOR U.S. CIVIL
SERVICE OR
FOREIGN
NATIONAL
FOR
OVERSEAS
SIMA OR U.S.
INDUSTRIAL
FACILITY**

**FOR U.S.
CONTRACTORS**

**FOR FOREIGN
CONTRACTORS**

**IF OTHERS NOT
AVAILABLE**

LIABILITY QUESTIONS OR COMMENTS?



Summary / Review

We talked about capabilities of civilians, DON and shipboard personnel.

We described authority of personnel, territorial waters, and responsibilities



Question #1: When can you Gas Free for a Civilian?



NEVER

(unless)

**EXTREME
EMERGENCY**

**INCREASE
POTENTIAL
LIABILITY**

Question #2: When May a Civilian Gas Free for You?



- QA ONLY
- CO's Call

Question #3: When May You Gas Free for a Foreign Contractor?



- **Outside US Territory**
- **& No Shore Maritime GFE**
- **& No local Competent Person**

Question #4: What is the Procedure for Military & Civilian Dual Occupancy?



- ↻ **CIVILIAN CERTIFIES FOR CONTRACTORS AND GFE CERTIFIES FOR SHIP'S CREW**
- ↻ **GFE WILL INFORM CONTRACTOR REP OF FINDINGS**
- ↻ **CONTRACTOR *SHALL BE INFORMED* THAT HE RETAINS LEGAL OBLIGATION FOR SAFETY OF CONTRACTOR PERSONNEL**