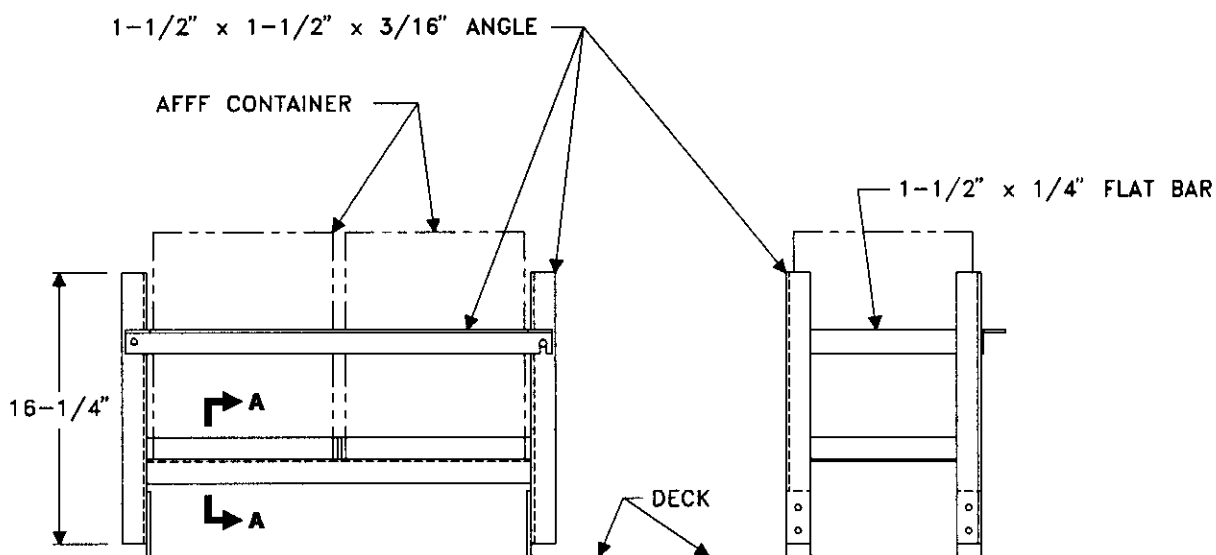
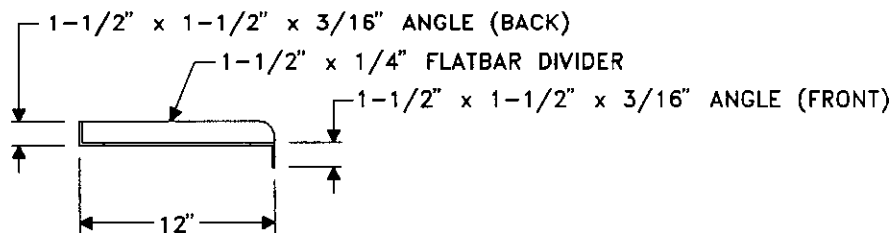


**PLAN**



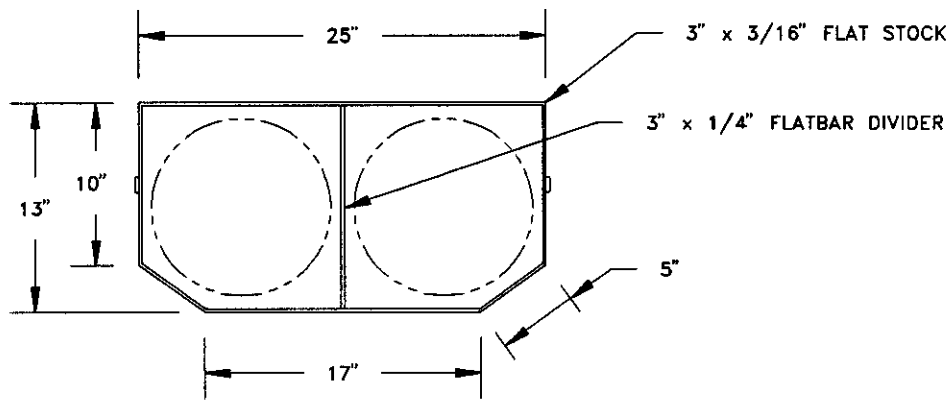
**ELEVATION**

**SIDE VIEW**

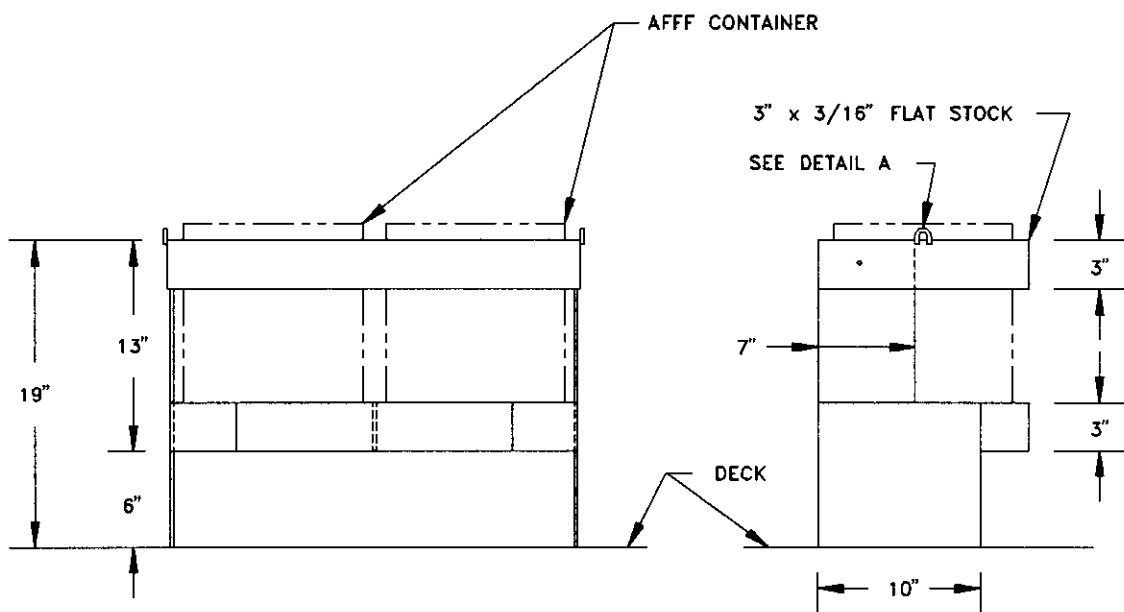


**SECTION A-A**

**DAMAGE CONTROL EQUIPMENT STOWAGE SKETCH # 003**  
**AFFF (5 GAL CAN) STOWAGE RACK**  
**VERSION 1**

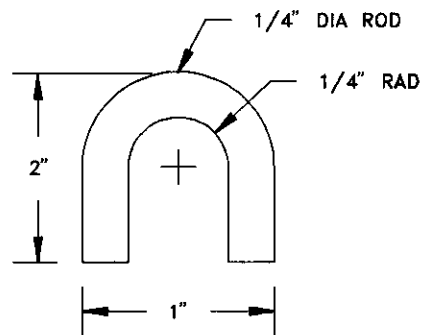


**PLAN**



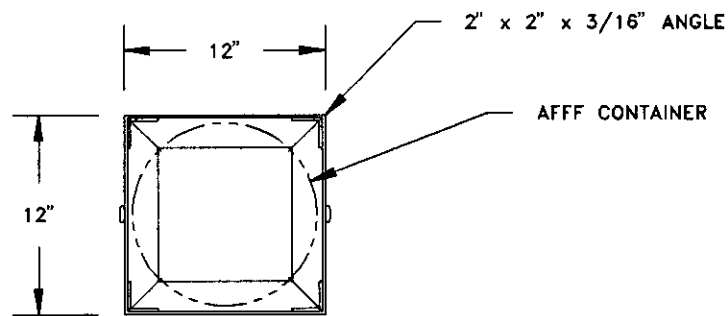
**ELEVATION**

**SIDE VIEW**

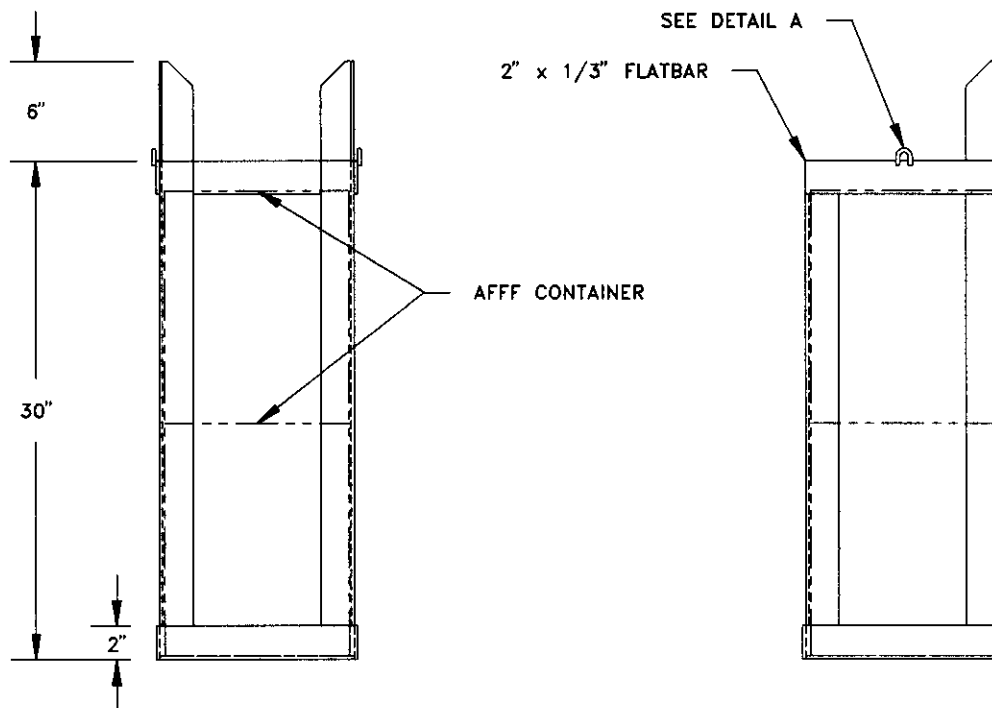


**DETAIL A**

# **DAMAGE CONTROL EQUIPMENT STOWAGE SKETCH # 004** **AFFF (5 GAL CAN) STOWAGE RACK** **VERSION 2**

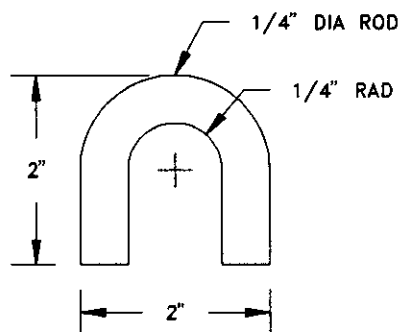


PLAN



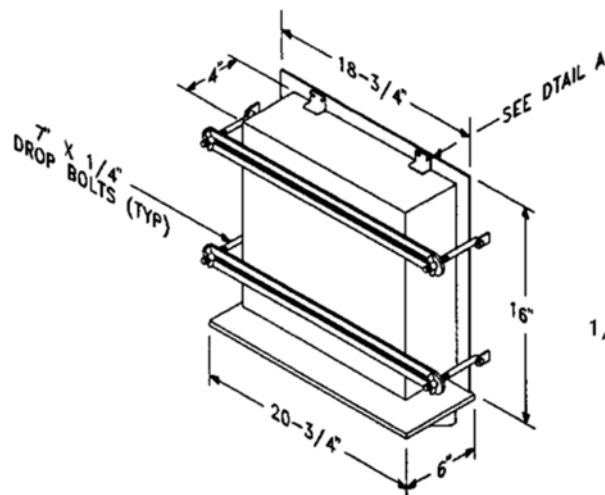
ELEVATION

SIDE VIEW



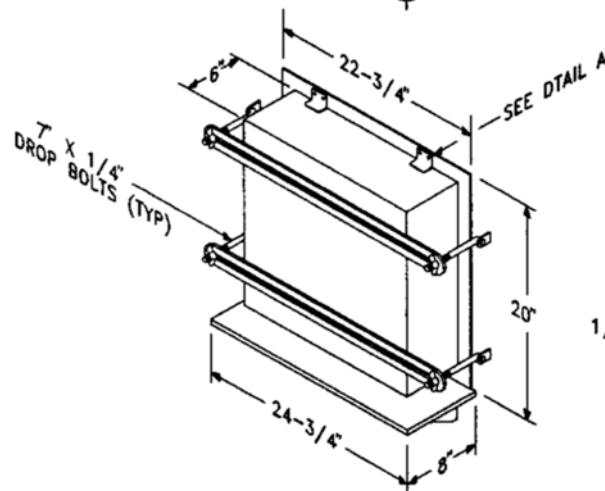
DETAIL A

**DAMAGE CONTROL EQUIPMENT STOWAGE SKETCH # 005**  
**AFFF (5 GAL CAN) STOWAGE RACK**  
**VERSION 3**



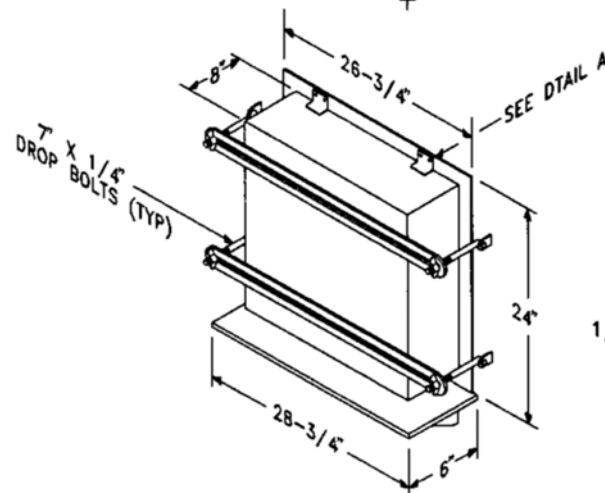
#### ASSEMBLY 1

STOWAGE RACK FOR  
4" X 16" X 18-3/4"  
1/8" STEEL PLATE BOX PATCH



#### ASSEMBLY 2

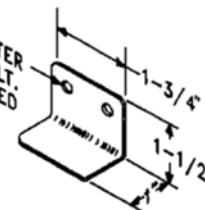
STOWAGE RACK FOR  
6" X 20" X 22-3/4"  
1/8" STEEL PLATE BOX PATCH



#### ASSEMBLY 3

STOWAGE RACK FOR  
8" X 24" X 26-3/4"  
1/8" STEEL PLATE BOX PATCH

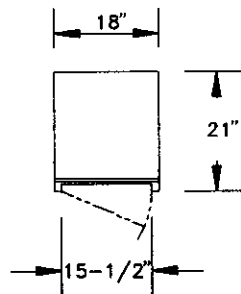
SIZE HOLE DIAMETER  
FOR RIVET OR BOLT.  
NO HOLES REQUIRED  
IF WELDED.



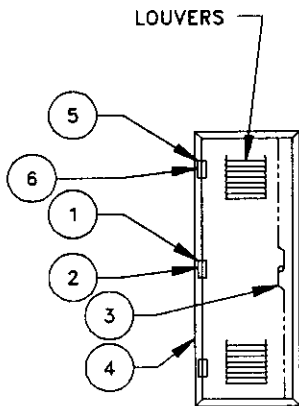
DETAIL A

## DAMAGE CONTROL EQUIPMENT STOWAGE SKETCH # 006

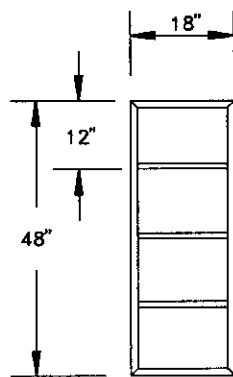
### BOX PATCH STOWAGE RACKS FOR ASSEMBLIES 1, 2 AND 3



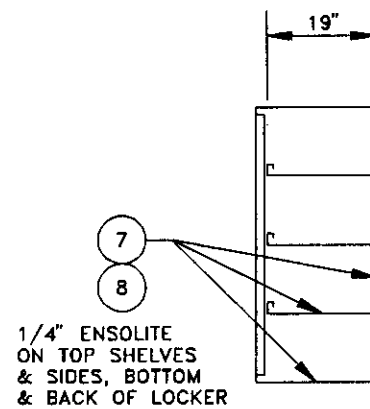
**PLAN**



**ELEVATION**



**ELEVATION  
(NO DOORS)**

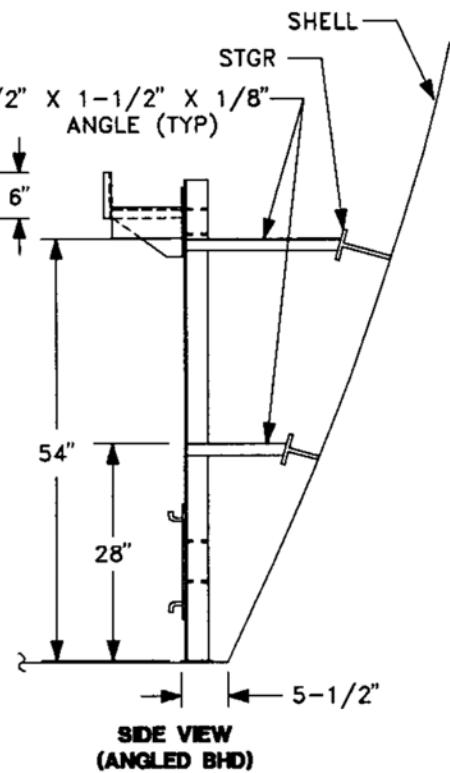
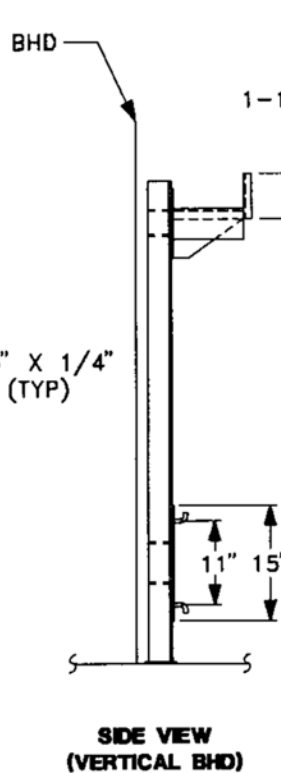
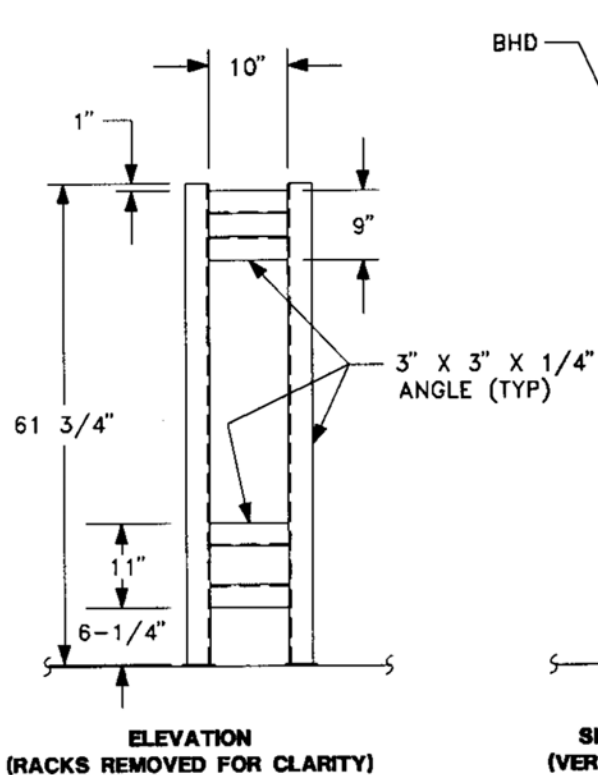
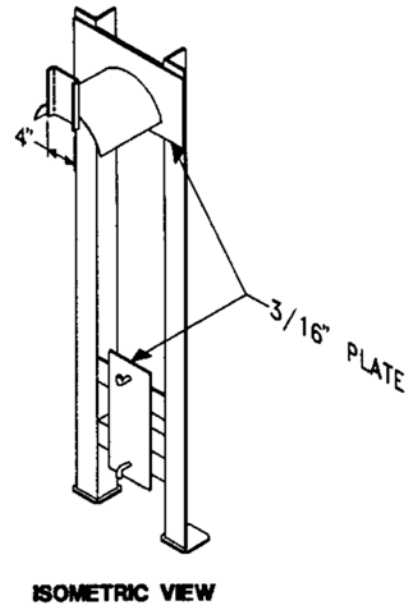
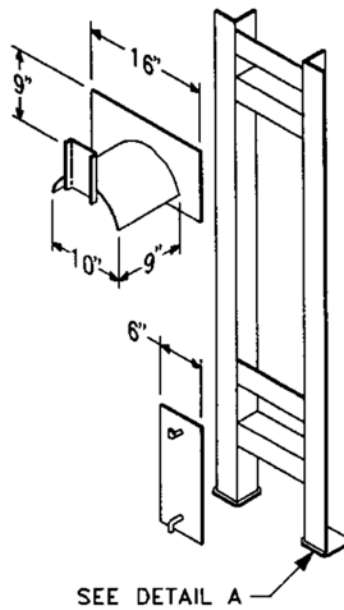
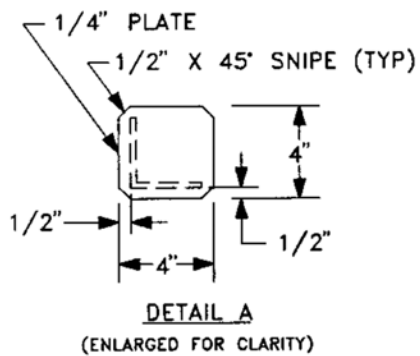


**SIDE VIEW**

**DAMAGE CONTROL EQUIPMENT STOWAGE SKETCH # 007**  
**CBR EQUIPMENT STOWAGE LOCKER**  
**PAGE 1 OF 2**

	ASSY	LIST OF MATERIAL			
QTY	PART NO.	NAME	MATERIAL	REFERENCES	REMARKS
3	1	HINGE, 2" x 1-5/8"	STL CAD PLTD	NN STOCK 17-15-302	
3	2	ANTI-RATTLER	RUBBER PURE GUM		
1	3	LOCKING DEVICE	SEE DET DWG	ASSY65, REF 6	
1	4	LOCKER	SEE DET DWG	REF 5	
6	5	HUCK RIVET SELF PLUGGING BLIND NO. P-6-D	ALUMINUM		
6	6	HUCK COMMERCIAL LOCK BOLT NO. CLPB F6-2	ALUMINUM		
AS REQ'D	7	1/4" ENSOLITE	TY III RUBBER		MIL-P-15280
AS REQ'D	8	BONDING AGENT	CEMENT		MIL-A-24179

**DAMAGE CONTROL EQUIPMENT STOWAGE SKETCH # 007**  
**CBR EQUIPMENT STOWAGE LOCKER**  
**PAGE 2 OF 2**

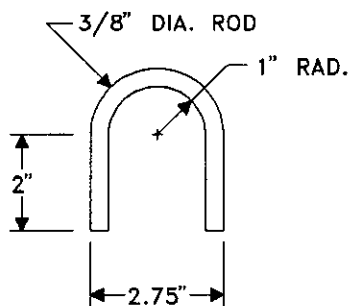
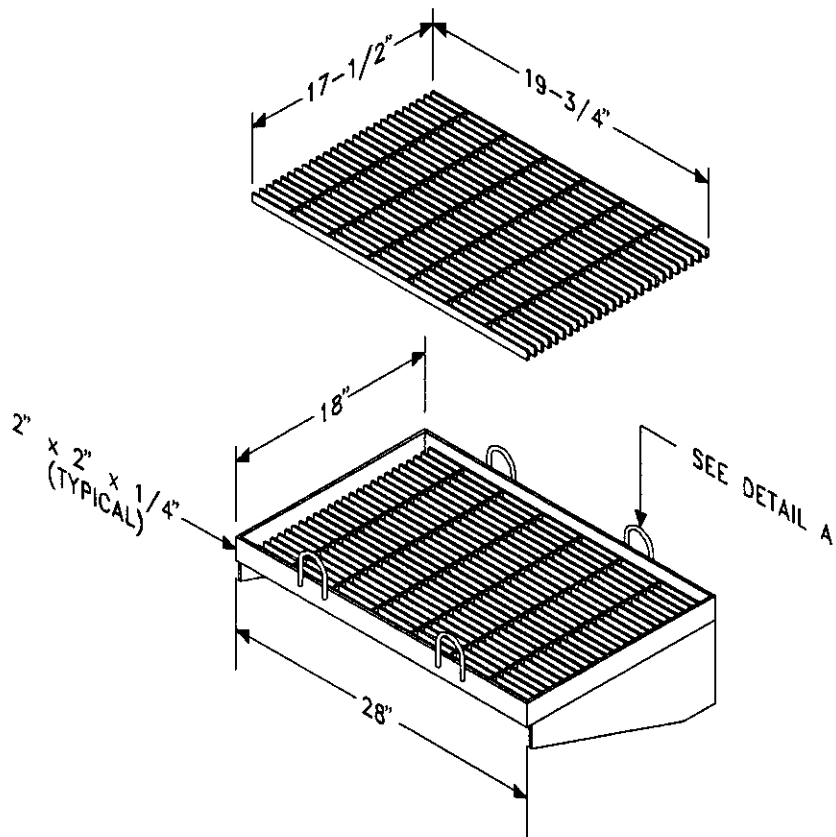


NOTE: CAN BE INSTALLED AGAINST SHELL STRINGER.

## DAMAGE CONTROL EQUIPMENT STOWAGE SKETCH # 008

### CASUALTY POWER CABLE STOWAGE RACK WITH VERTICAL AND ANGLED BULKHEAD STOWAGE

# LARGE DC EQUIPMENT

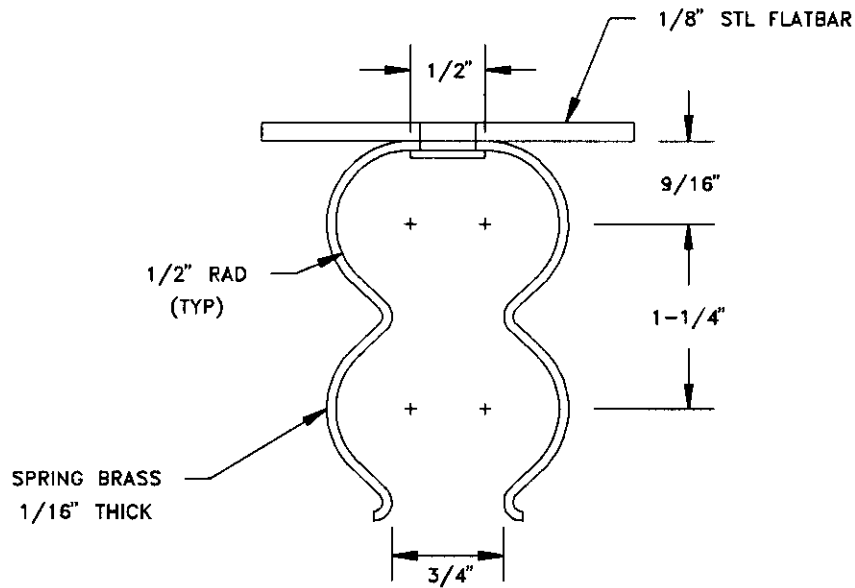


DETAIL A

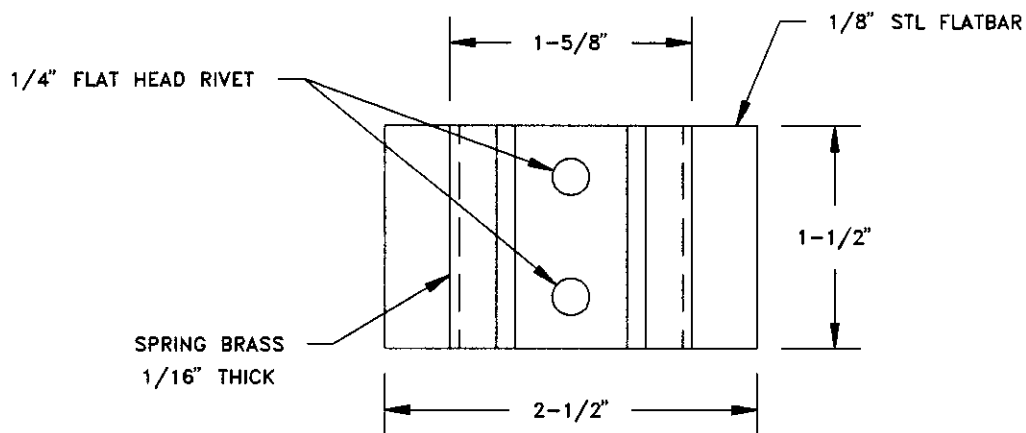
**DAMAGE CONTROL EQUIPMENT STOWAGE SKETCH # 009**

**DAMAGE CONTROL EQUIPMENT STOWAGE (LARGE) GRATING**





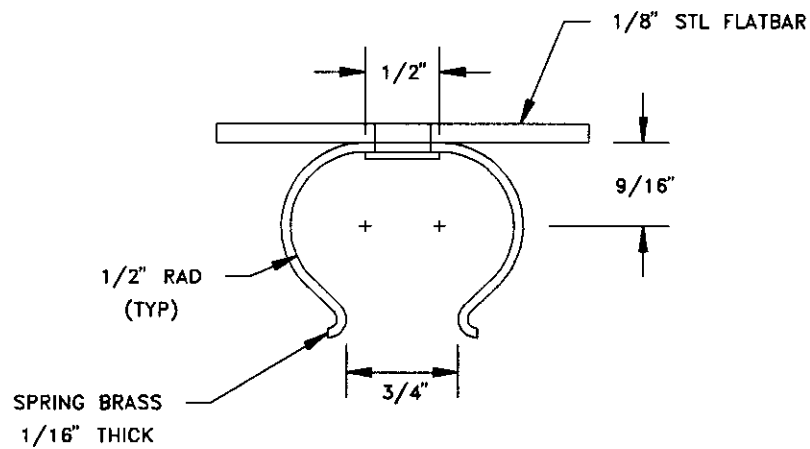
**ELEVATION**



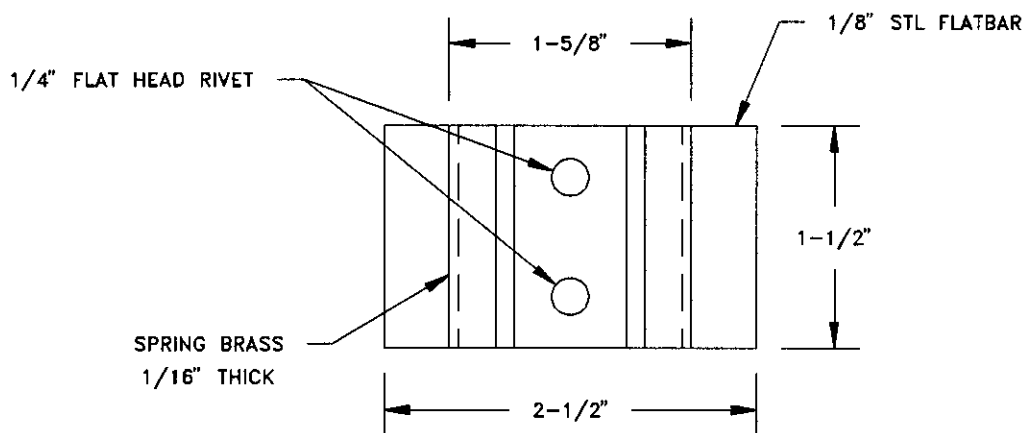
**ELEVATION**

**SPRING CLIP FOR 2 AXES**

**DAMAGE CONTROL EQUIPMENT STOWAGE SKETCH # 010**  
**DAMAGE CONTROL EQUIPMENT STOWAGE (SPRING CLIPS)**  
**PAGE 1 OF 3**



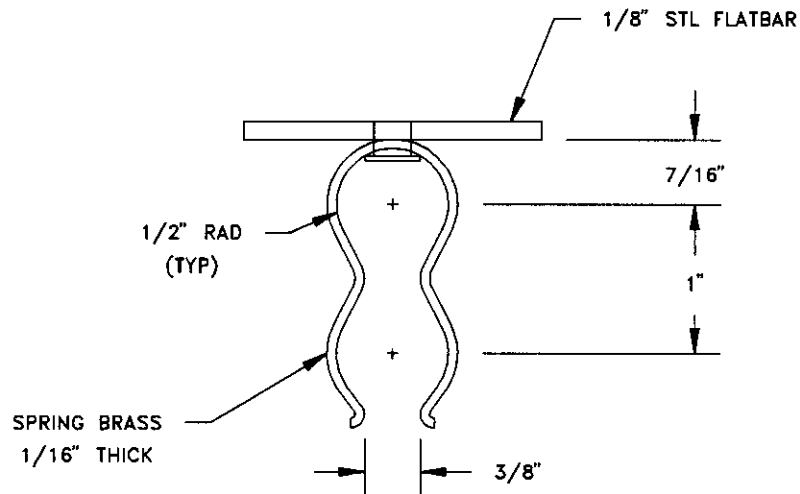
**ELEVATION**



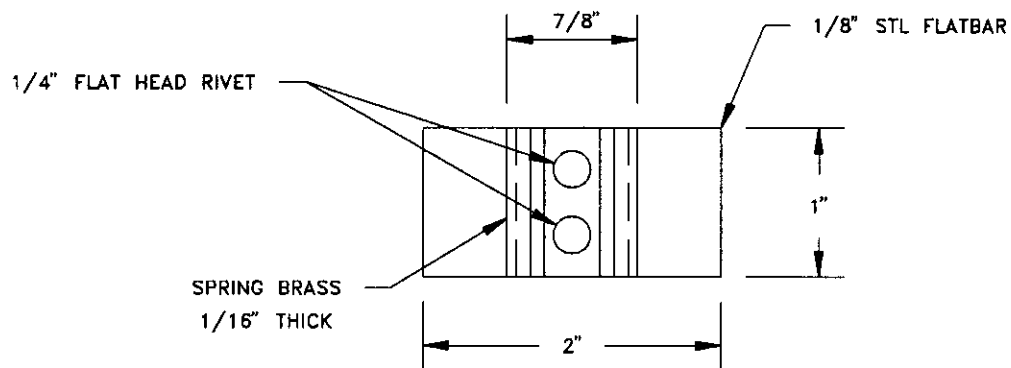
**ELEVATION**

**SPRING CLIP**

**DAMAGE CONTROL EQUIPMENT STOWAGE SKETCH # 010**  
**DAMAGE CONTROL EQUIPMENT STOWAGE (SPRING CLIPS)**  
**PAGE 2 OF 3**



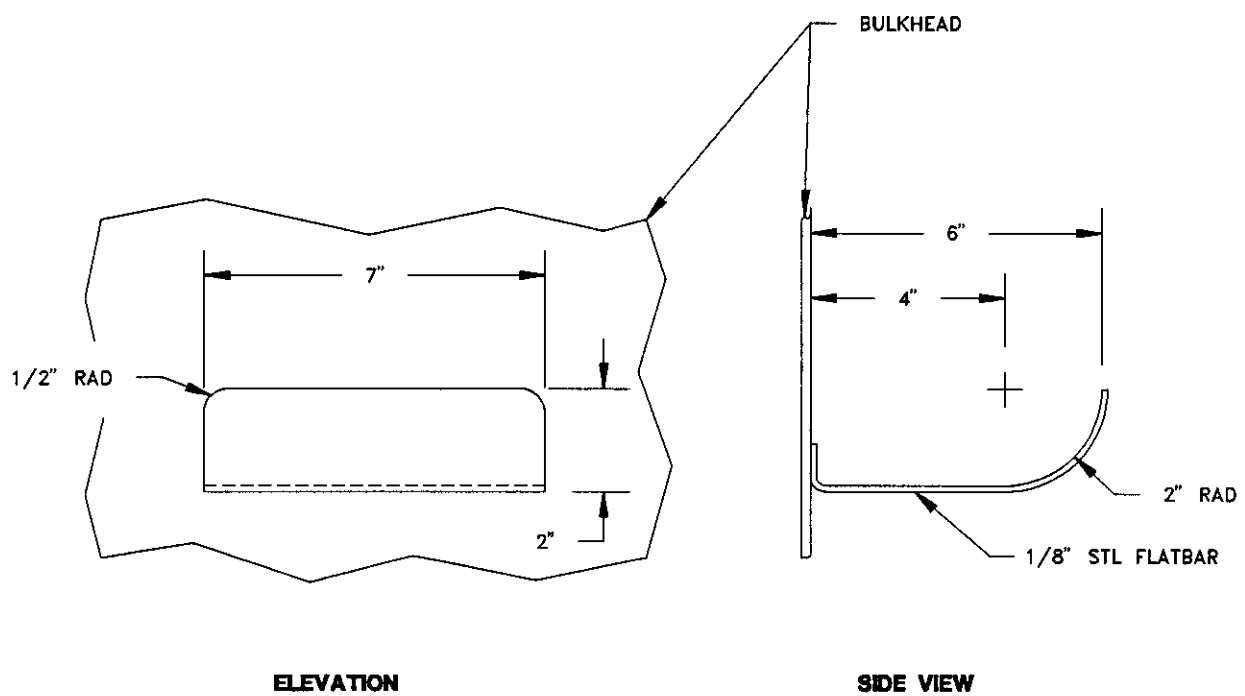
**ELEVATION**



**ELEVATION**

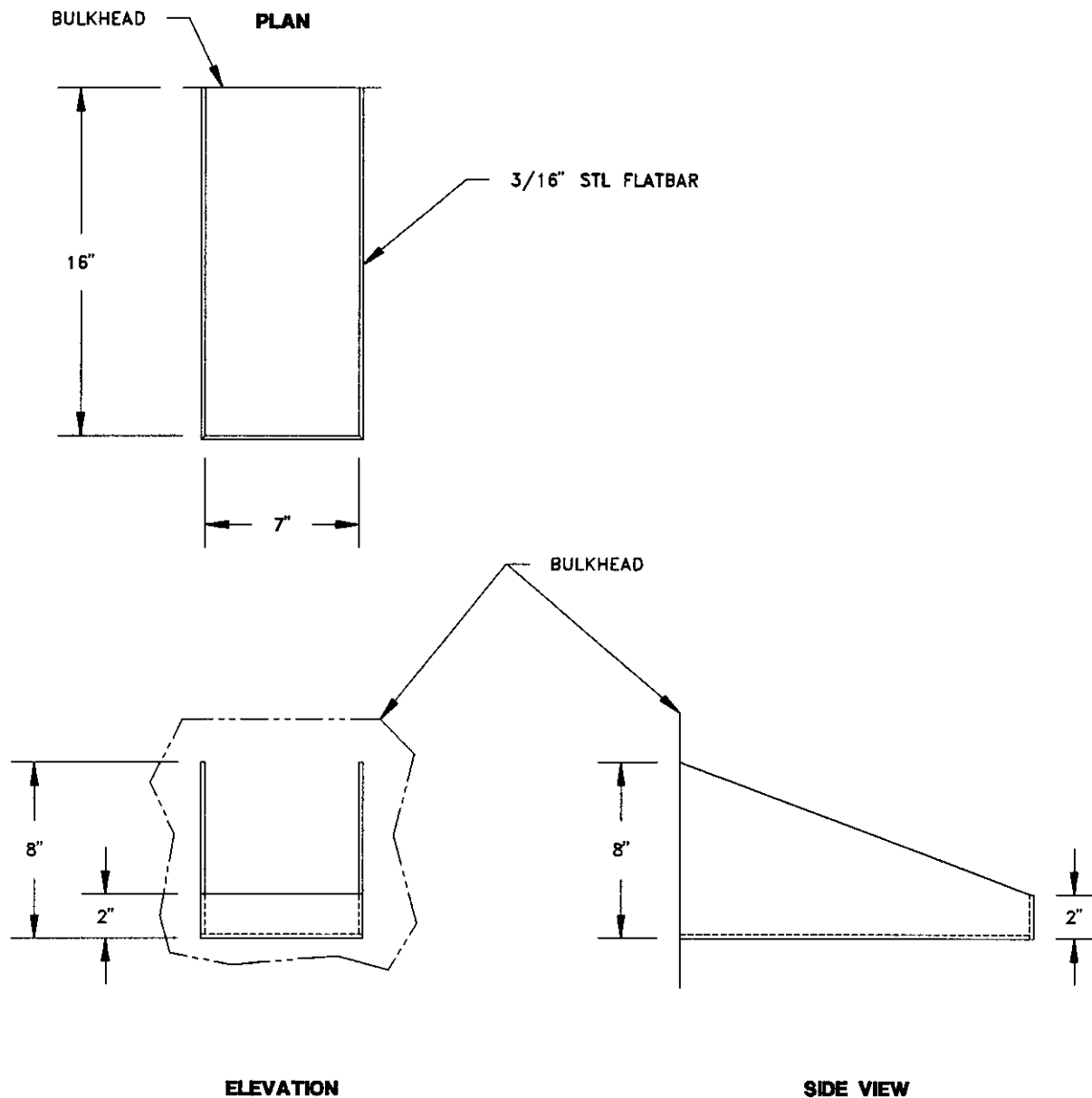
**SPRING CLIP FOR 2 WRECK BARS**

**DAMAGE CONTROL EQUIPMENT STOWAGE SKETCH # 010**  
**DAMAGE CONTROL EQUIPMENT STOWAGE (SPRING CLIPS)**  
**PAGE 3 OF 3**



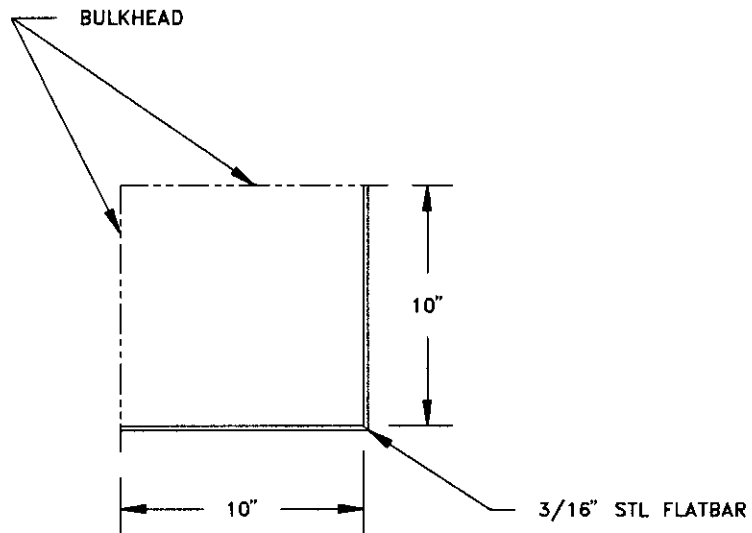
**"L" SUPPORT**

**DAMAGE CONTROL EQUIPMENT STOWAGE SKETCH # 011**  
**DAMAGE CONTROL EQUIPMENT STOWAGE SUPPORT BRACKETS**  
**PAGE 1 OF 4**

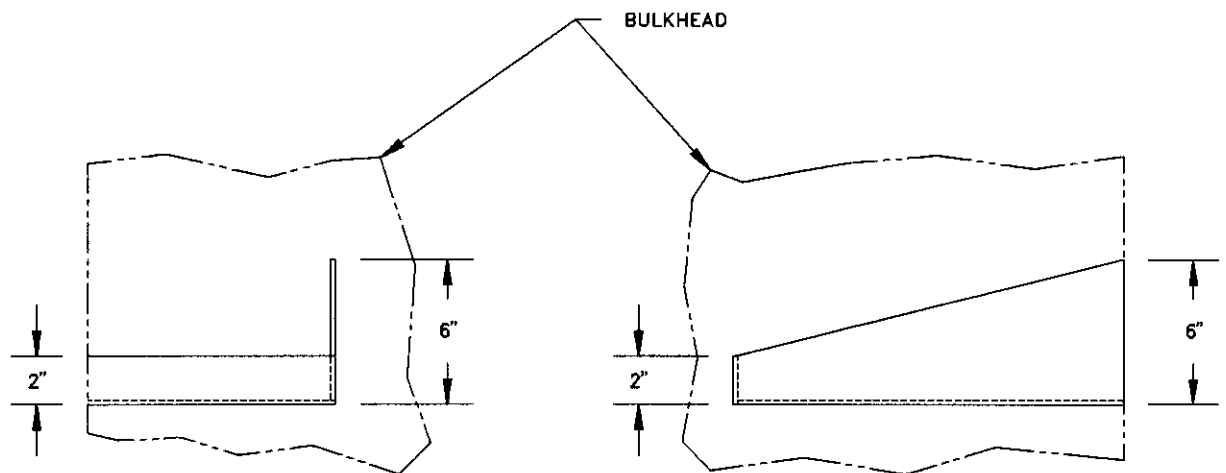


**"P" SUPPORT**

**DAMAGE CONTROL EQUIPMENT STOWAGE SKETCH # 011**  
**DAMAGE CONTROL EQUIPMENT STOWAGE SUPPORT BRACKETS**  
**PAGE 2 OF 4**



**PLAN**

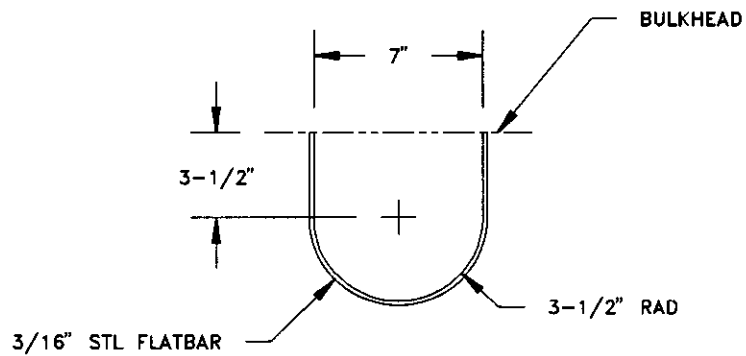


**ELEVATION**

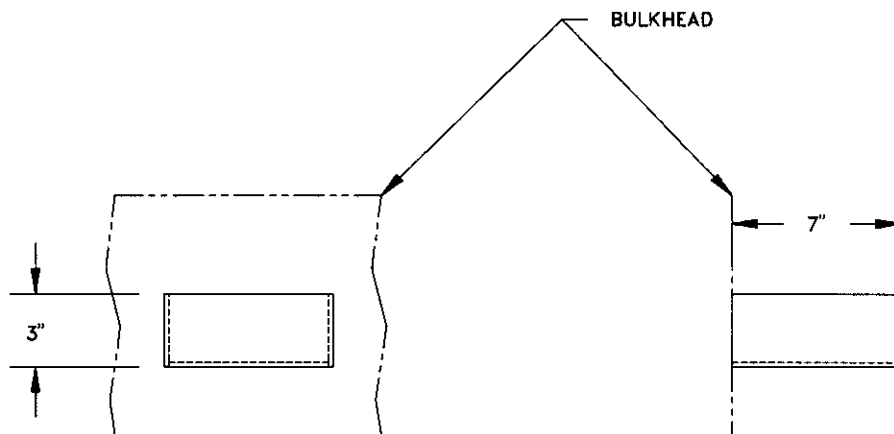
**SIDE VIEW**

**"Q" SUPPORT**

**DAMAGE CONTROL EQUIPMENT STOWAGE SKETCH # 011**  
**DAMAGE CONTROL EQUIPMENT STOWAGE SUPPORT BRACKETS**  
**PAGE 3 OF 4**



PLAN



ELEVATION

SIDE VIEW

"R" SUPPORT

**DAMAGE CONTROL EQUIPMENT STOWAGE SKETCH # 011**  
**DAMAGE CONTROL EQUIPMENT STOWAGE SUPPORT BRACKETS**  
**PAGE 4 OF 4**