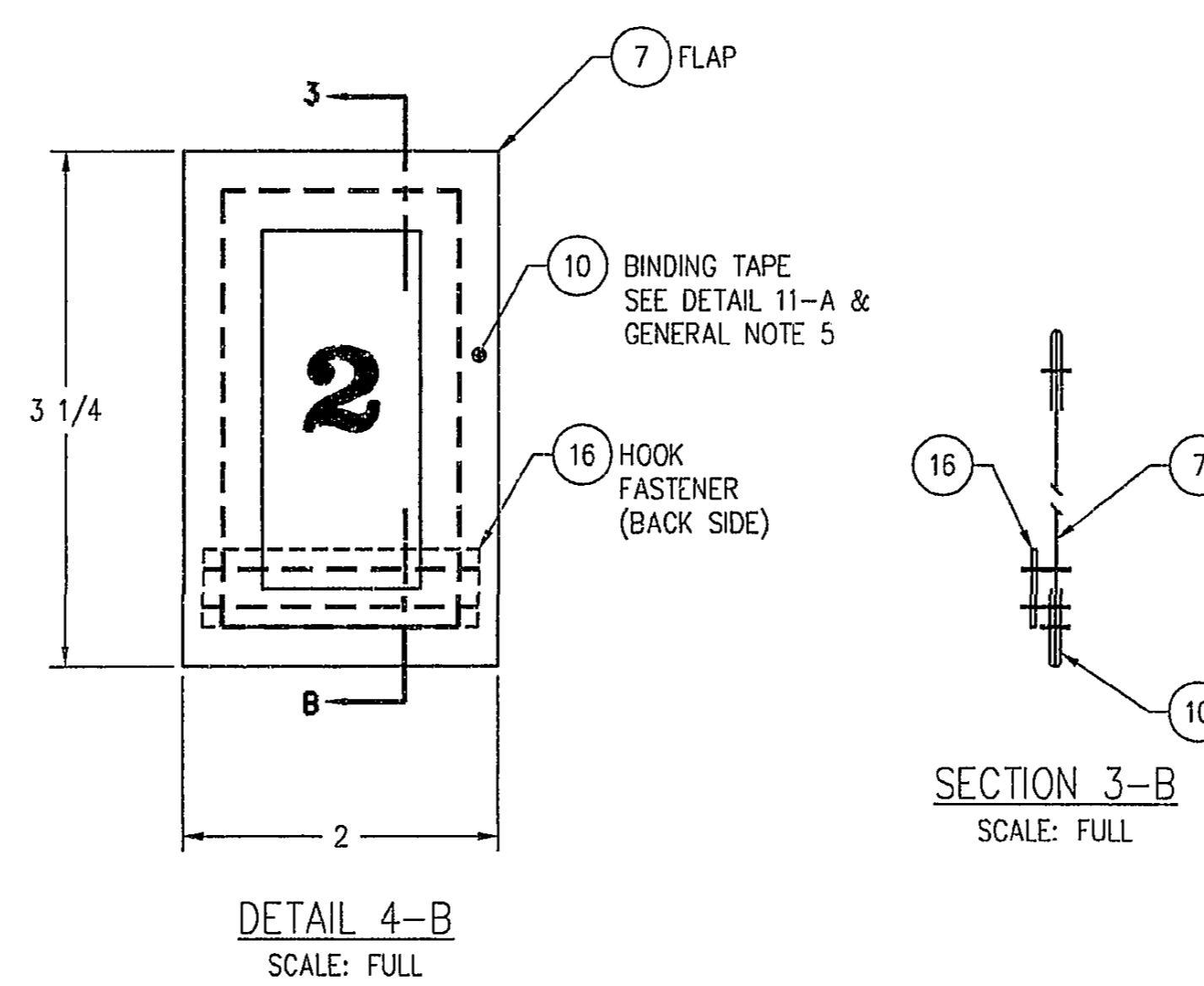
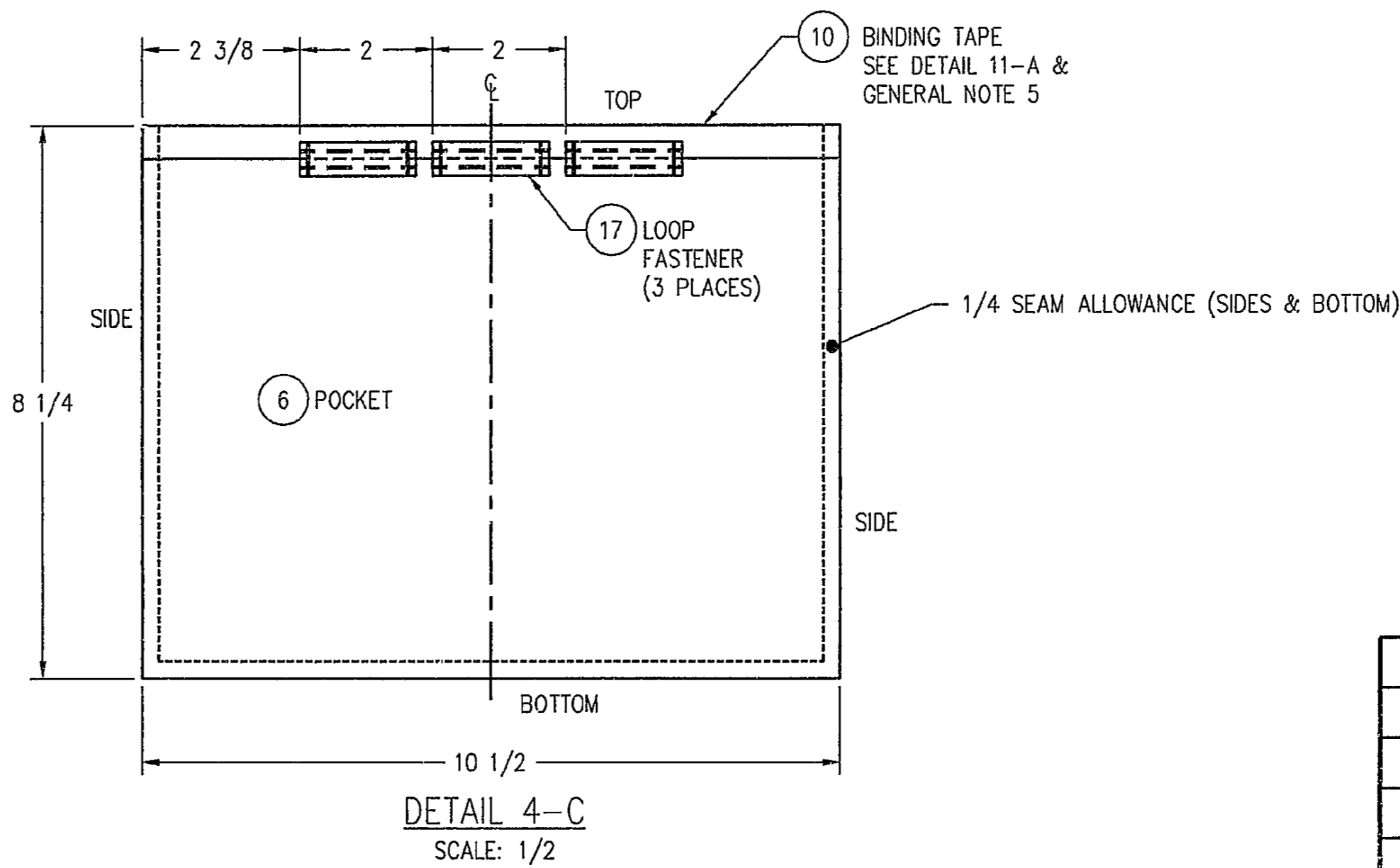
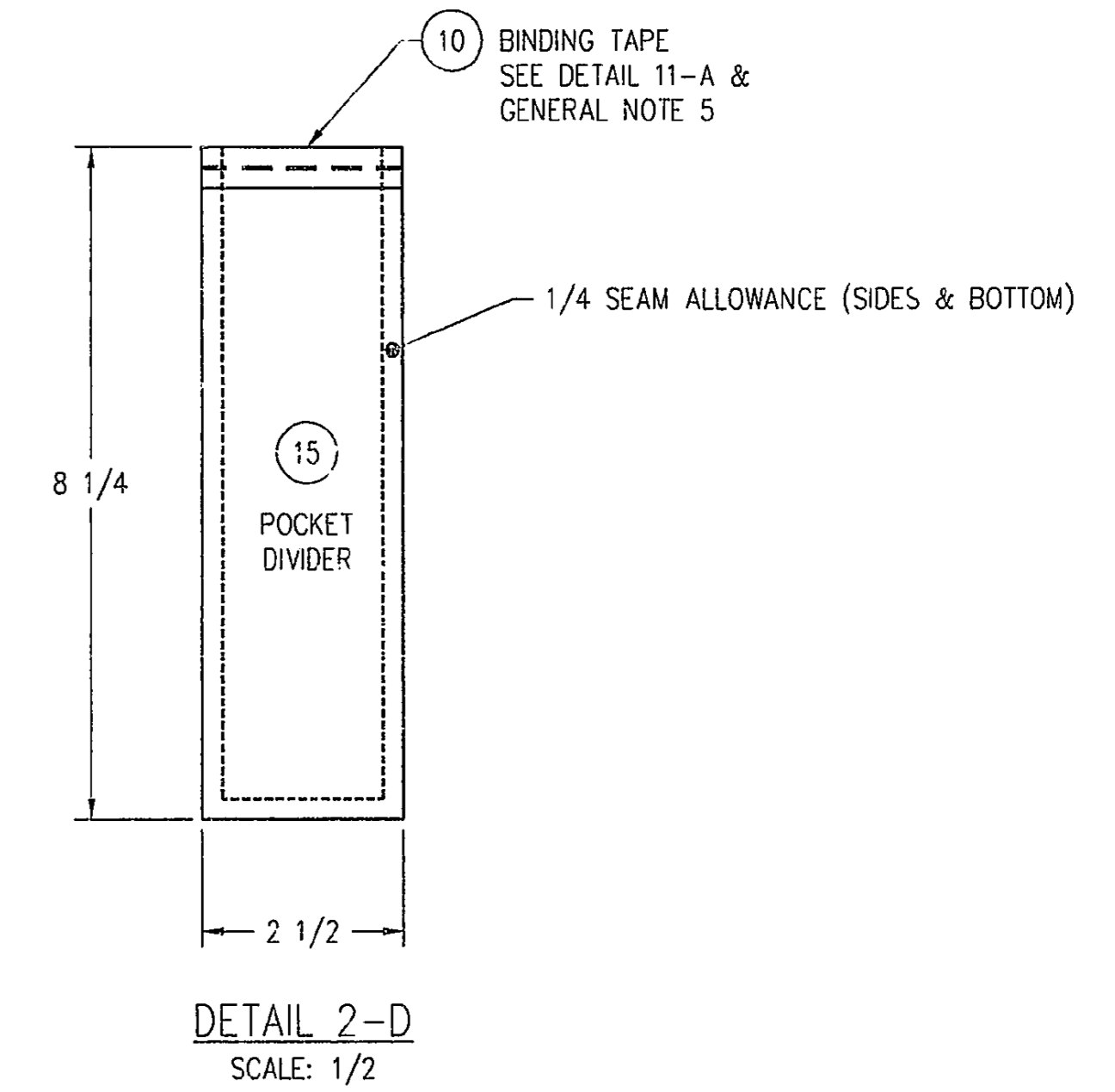
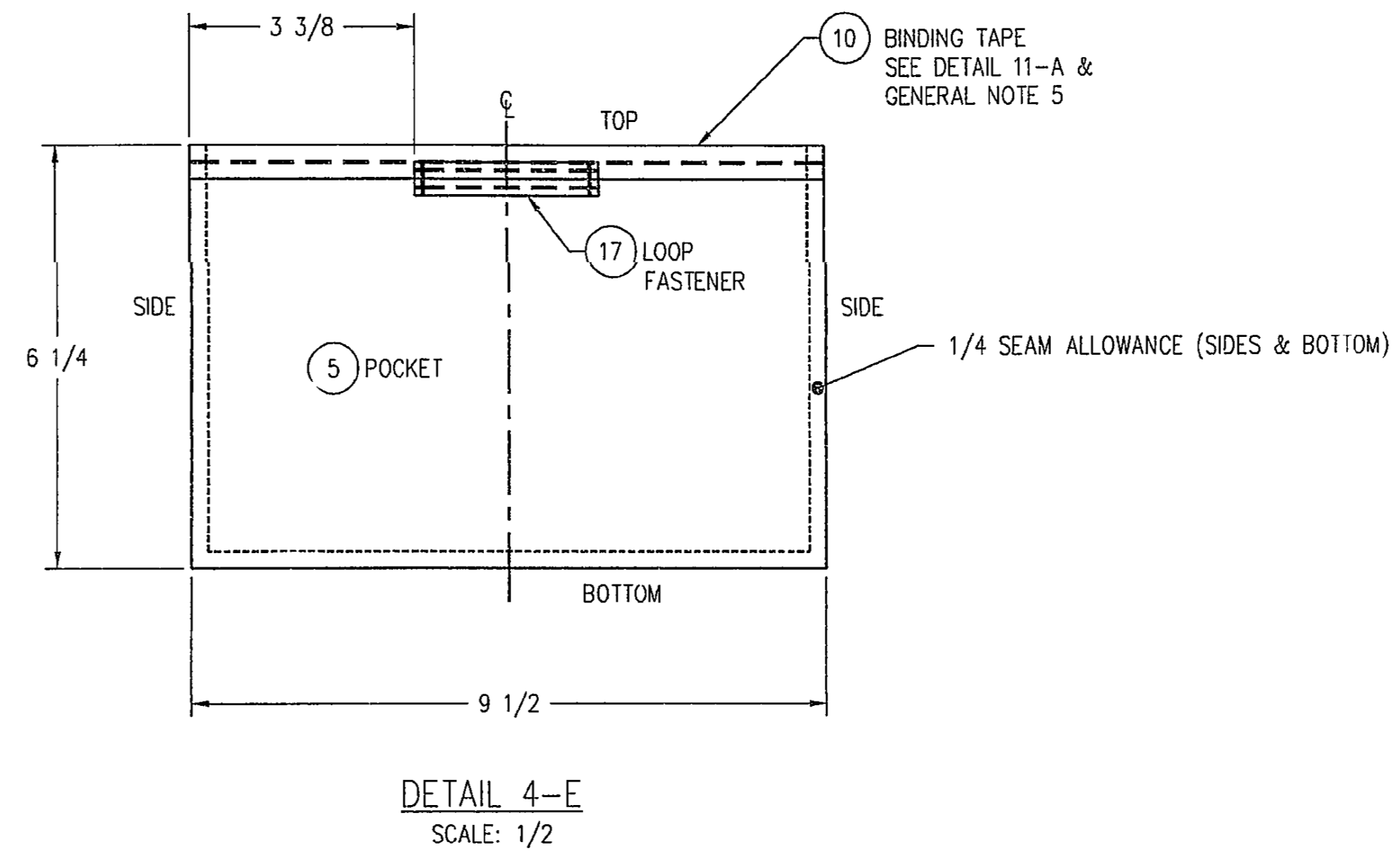
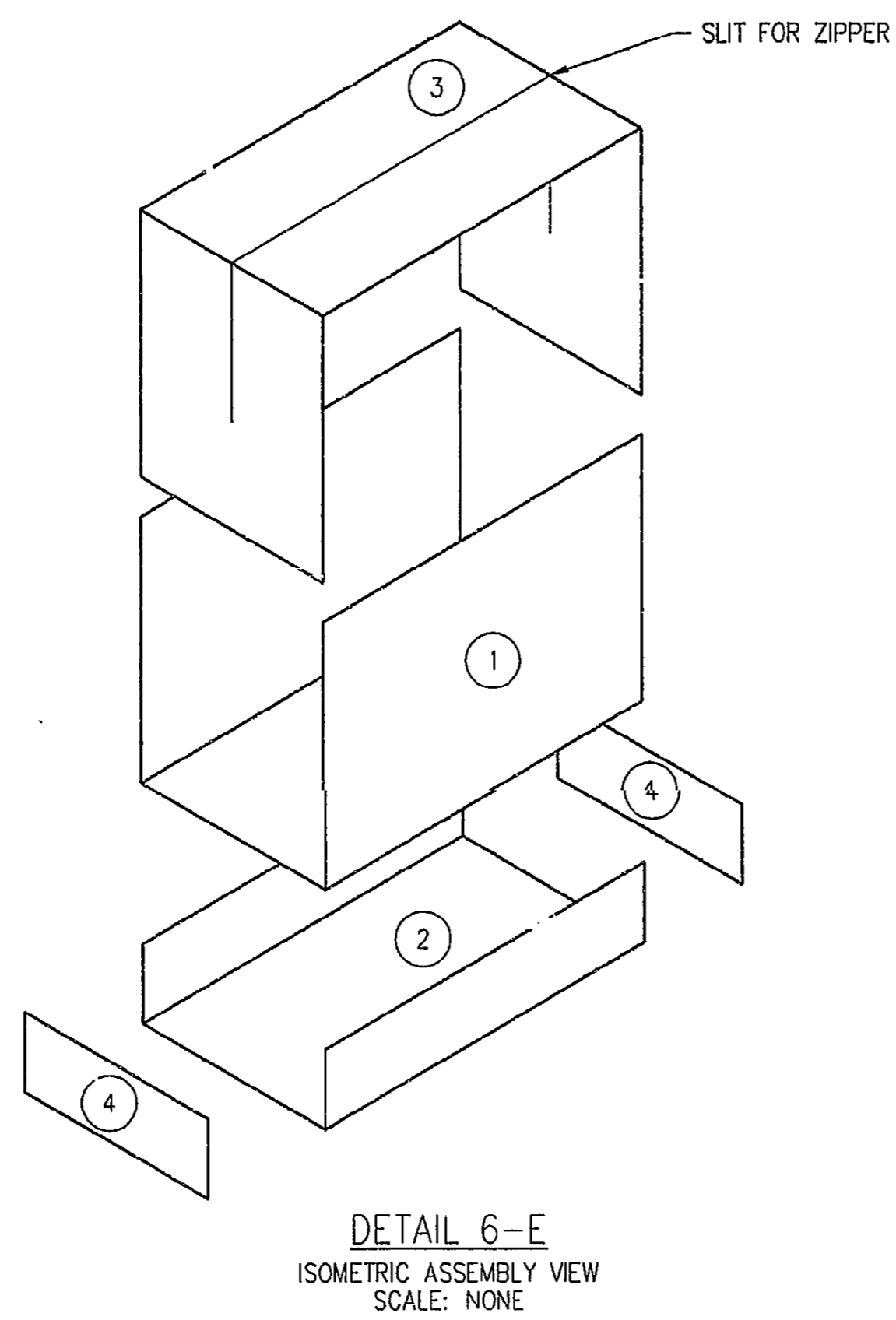


**GENERAL NOTES**

- SINGLE STITCHING USED THROUGHOUT.
- CONTENTS OF KIT MAY BE REQUISITIONED SEPARATELY FROM COGNIZANT ACTIVITIES BY INDIVIDUAL STOCK NUMBERS. SEE AEL 2-880043003.
- THE COLOR OF THE STENCILED LETTERS SHALL BE WHITE.
- OVERALL SEAM ALLOWANCE IS 1/4".
- ATTACH BINDING TAPE TO PC'S 5, 6 & 7 PRIOR TO SEWING. SEE DETAIL 4-B, 4-C & 4-E.
- ATTACH FLAP (PC 7) TO POCKET (PC 6) WITH CENTER BACK OF PC 7 ALIGNED WITH SEAM OF PC 6.
- SEW BOTTOM OF POCKET'S (PC'S 5 & 6) TO MATERIAL BAG BOTTOM AS SHOWN IN PLAN VIEW 14-D.
- STITCHING INDICATED BY:   
 HIDDEN LINE INDICATED BY:   
 - - - - -
- FOR FLAP (PC 7), STENCIL 1/2" HIGH NUMBER CENTERED ON FLAP. STENCIL A "2" ON ONE PC 7, A "3" ON A SECOND PC 7, AND A "4" ON A THIRD PC 7. THE FOURTH PC 7 SHALL REMAIN BLANK.
- COLOR IS RED (EXCEPT PART NO 14 IS BLACK), AND TOPICALLY TREATED FOR FIRE, WATER, WEATHER, AND MILDEW RESISTANCE.
- DEVIATIONS FROM THIS DRAWING ARE PERMITTED OR AREAS SUBJECT TO DEVELOPMENT ARE INDICATED WHERE NOTED WITH AN ASTERISK (\*).



**SUBMARINE  
DAMAGE CONTROL  
BAND-IT  
MATERIAL KIT**

NO	PC	DESCRIPTION	MATERIAL	MATL SPEC	REMARKS	REF DWG
AR	19	INK MARKING		COMMERCIAL	PERMANENT, WHITE	
AR	18	THREAD	NYLON			
3	17	FASTENER, LOOP	HOOK & LOOP PILE FASTENER		1/2 X 1 3/4, FIRE RETARDANT	
3	16	FASTENER, HOOK	HOOK & LOOP PILE FASTENER		1/2 X 1 3/4, FIRE RETARDANT	
2	15	DIVIDER, POCKET	COTTON DUCK NO. 8		2 1/2 X 8 1/4, SEE G. N. 10	
2	14	HANDLE	COTTON DUCK NO. 8		2 7/8 X 21 1/2, SEE G. N. 10	
2	13	REINFORCEMENT, INSIDE, FOR ZIPPER	UPHOLSTERY LEATHER		1 1/2 X 1 X 1	
2	12	REINFORCEMENT, OUTSIDE, FOR ZIPPER	UPHOLSTERY LEATHER		2 1/2 X 2 X 2	
1	11	ZIPPER, DOUBLE SIDED	METAL		34 HEAVY DUTY	
AR	10	TAPE, BINDING	COTTON		1 WIDE, SEE G. N. 10	
1	9	SHEET, TRANSPARENT PLASTIC	CELLULOSE ACETATE		6 X 10	
1	8	HOLDER, ADL	COTTON DUCK NO. 8		7 X 11, SEE G. N. 10	
4	7	FLAP			2 X 3 1/4, SEE G. N. 10	
1	6	POCKET			8 1/4 X 10 1/2, SEE G. N. 10	
1	5	POCKET			8 1/4 X 12 1/2, SEE G. N. 10	
2	4	REINFORCING, END			4 1/2 X 10 1/2 LAP - BOTTOM & SIDES SEE G. N. 10	
1	3	TOP & END PIECES			10 X 40, SEE G. N. 10	
1	2	REINFORCING, BOTTOM			45 X 45 1/2" LAP, SEE G. N. 10	
1	1	SIDE & BOTTOM PIECE	COTTON DUCK NO. 8		16 X 34 1" LAP, SEE G. N. 10	

PARTS LIST

2	1	SH	REVISION STATUS OF SHEETS
-	-	REV	

THIS DRAWING REPLACES S8802-H-955708 STANDARD DRAWING

UNLESS OTHERWISE NOTED, DIMENSIONS ARE IN INCHES

TOLERANCES ARE IN ACCORDANCE WITH COMMERCIAL PRACTICE UNLESS OTHERWISE INDICATED ON DRAWING

APPROVED FOR PUBLIC RELEASE: DISTRIBUTION IS UNLIMITED

DEPARTMENT OF THE NAVY WASHINGTON, D.C. 20362-5101

**NAVAL SEA SYSTEMS COMMAND**

**BAG, SUBMARINE DAMAGE CONTROL BAND-IT MATERIAL KIT**

CONTRACT NO. DIV. DIR. SUBGRP DIR. PROJ. ENGR. BR. HD. DATE

CAGE CODE 78203

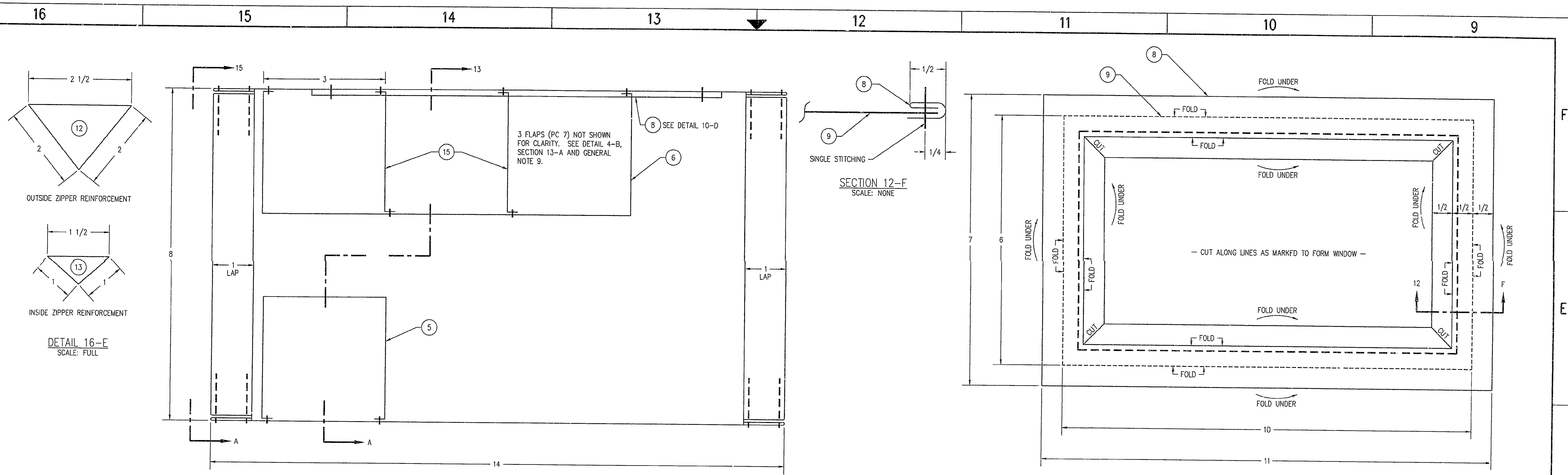
ESWBS 53711

803

6983473

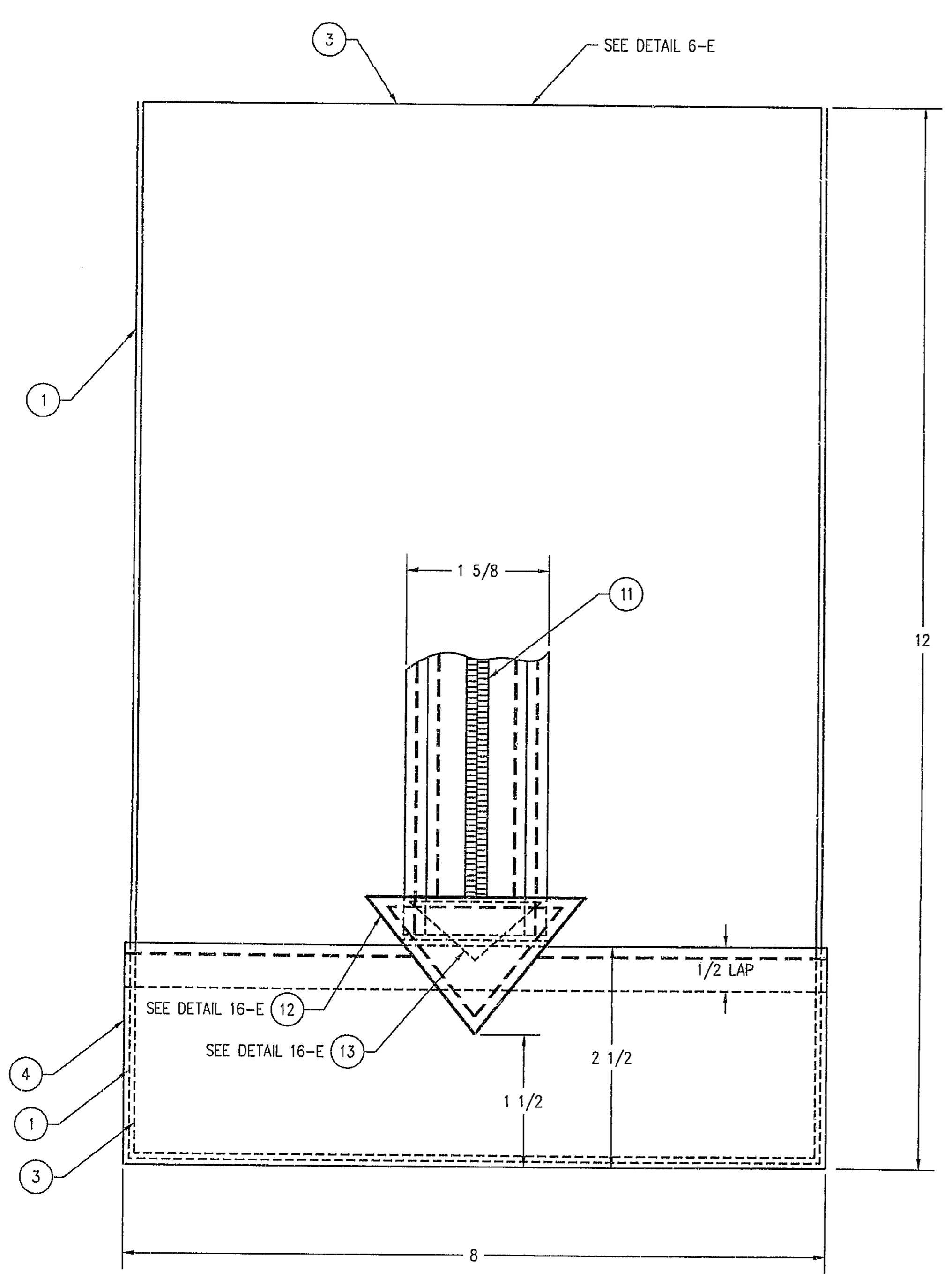
SCALE: 1/2 MASS (WEIGHT):

SHEET 1 OF 2

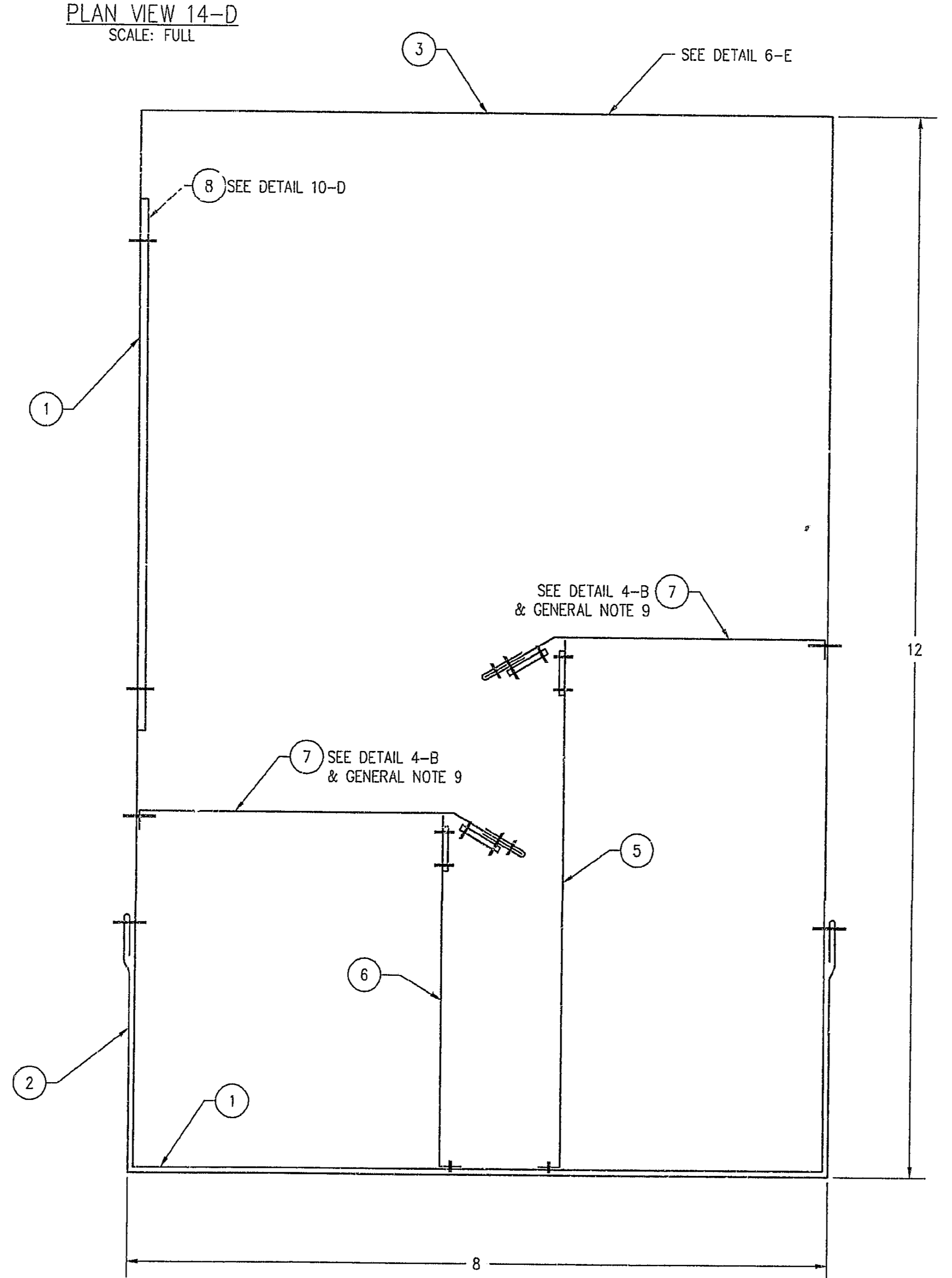


PLAN VIEW 14-D  
SCALE: FULL

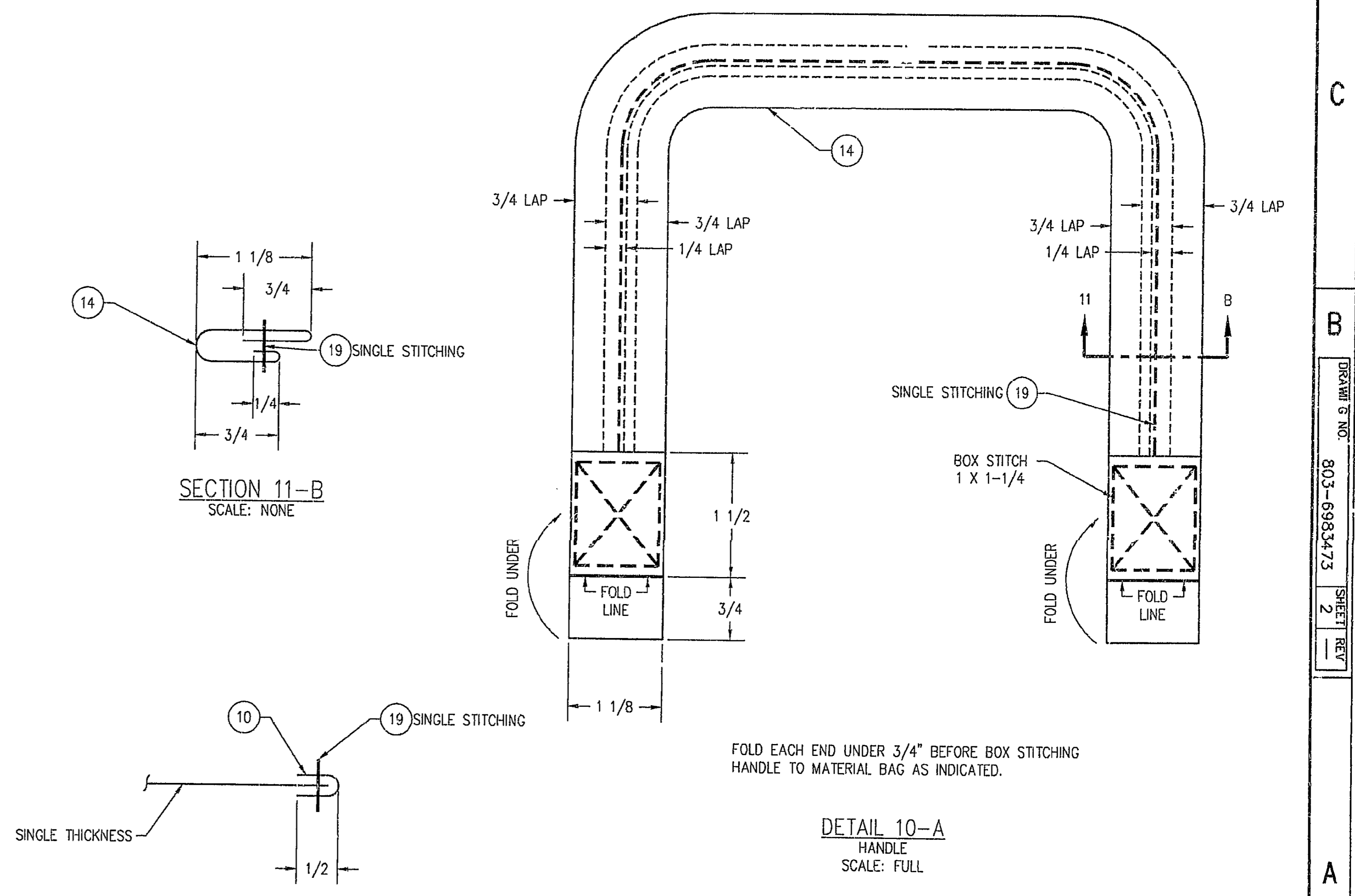
DETAIL 10-D  
AEL HOLDER ASSEMBLY  
SCALE: FULL



SECTION 15-A  
SCALE: FULL



SECTION 13-A  
SCALE: FULL



SECTION 11-B  
SCALE: NONE

DETAIL 10-A  
HANDLE  
SCALE: FULL

DRAWING NO.		SIZE	CAGE CODE	ESWS	DRAWING NO.	REV
803-6983473		F	53711	803	6983473	
ISSUED		SCALE: FULL		MASS (WEIGHT):		SHEET 2