

GENERAL NOTES

1. SINGLE STITCHING USED THROUGHOUT.
2. CONTENTS OF KIT MAY BE REQUISITIONED SEPARATELY FROM COGNIZANT ACTIVITIES BY INDIVIDUAL STOCK NUMBERS. SEE AEL 2-880043003.
3. THE COLOR OF THE STENOLED LETTERS SHALL BE WHITE.
4. OVERALL SEAM ALLOWANCE IS 1/4".
5. ATTACH BINDING TAPE TO PC'S 5, 6 & 7 PRIOR TO SEWING. SEE DETAIL 4-B, 4-C & 4-E.
6. ATTACH FLAP (PC 7) TO POCKET (PC 6) WITH CENTER BACK OF PC 7 ALIGNED WITH SEAM OF PC 6.
7. SEW BOTTOM OF POCKETS (PC'S 5 & 6) TO MATERIAL BAG BOTTOM AS SHOWN IN PLAN VIEW 14-D.
8. STITCHING INDICATED BY: - - - - -
HIDDEN LINE INDICATED BY: - - - - -
9. COLOR IS RED (EXCEPT PC 14 IS BLACK), AND TOPICALLY TREATED FOR FIRE, WATER, WEATHER, AND MILDEW RESISTANCE.
10. DEVIATIONS FROM THIS DRAWING ARE PERMITTED OR AREAS SUBJECT TO DEVELOPMENT ARE INDICATED WHERE NOTED WITH AN ASTERISK (*).

REVISIONS				
ZONE	REV	DESCRIPTION	DATE	APPROVED
A-1	A	1. CHANGED MATL. SPEC FOR PC 1, 2, 3, 4, 5, 6, 7, 8, AND 14 TO COMMERCIAL.		
E-7	A	1. ADDED GENERAL NOTES 9 AND 10.		

**SUBMARINE
DAMAGE CONTROL
MATERIAL BAG**

NO	PC NO	DESCRIPTION	MATERIAL	MATL SPEC	REMARKS	REF DWG
1	18	BUTTON	MODEL PLATED BRASS/ STAINLESS STEEL		COMPONENT OF BUTTON SHAP	
1	17	SOCKET				
1	16	STUD				
1	15	EYELET	MODEL PLATED BRASS/ STAINLESS STEEL		COMPONENT OF BUTTON SHAP	
2	14	HANDLE	COTTON DUCK NO. 8		2 7/8 X 2 1/2. SEE G. N. 9	
2	13	REINFORCEMENT, INSIDE, FOR ZIPPER	UNPOLISHED LEATHER		1 1/2 X 1 X 1	
2	12	REINFORCEMENT, OUTSIDE, FOR ZIPPER	UNPOLISHED LEATHER		2 1/2 X 2 X 2	
1	11	ZIPPER, DOUBLE SLIDER	METAL		30 HEAVY DUTY	
NR	10	TAPE, ENDING	COTTON		1 YD. SEE G. N. 9	
1	9	SHEET, TRANSPARENT PLASTIC	CELLULOSE ACETATE		6 X 10	
1	8	HOLDER, AEL	COTTON DUCK NO. 8		7 X 11. SEE G. N. 9	
1	7	FLAP			4 X 6 1/2 (FOR PC 6). SEE G. N. 9	
1	6	POCKET			7 1/4 X 15 1/2. SEE G. N. 9	
1	5	POCKET			8 1/4 X 12 1/2. SEE G. N. 9	
2	4	REINFORCING, END			4 X 10. 1" LAP - BOTTOM & SEES 1/2" LAP - TOP. SEE G. N. 9	
1	3	TOP & END PIECES			10 X 36. SEE G. N. 9	
1	2	REINFORCING, BOTTOM			13 X 14. 1/2" LAP. SEE G. N. 9	
1	1	SIDE & BOTTOM PIECE	COTTON DUCK NO. 8	COMMERCIAL	14 X 32. 1" LAP. SEE G. N. 9	

THIS DRAWING REPLACES S8802-H-955708 STANDARD DRAWING

APPROVED FOR PUBLIC RELEASE: DISTRIBUTION IS UNLIMITED

UNLESS OTHERWISE NOTED, DIMENSIONS ARE IN INCHES

TOLERANCES ARE IN ACCORDANCE WITH COMMERCIAL PRACTICE UNLESS OTHERWISE INDICATED ON DRAWING

CONTRACT NO. _____

TRFES ACTIVITY _____

DATE: 1/21/84

PREPARED BY: J. BOULANGER 1/21/84

CHECKED BY: M. BRANTON 1/21/84

NO. ENGR. _____

BR. NO. _____

PROJ. ENGR. M. CAMPBELL 2/7/84

BR. NO. M. J. REYDA 2/7/84

DIV. DIR. S. NEWMAN 2/7/84

SUBGRP DIR. J. T. FLOOD 2/14/84

APPROV. FOR TOURNAISEAU 2/14/84

J. T. FLOOD 2/14/84

DEPARTMENT OF THE NAVY WASHINGTON, D.C. 20362-5101

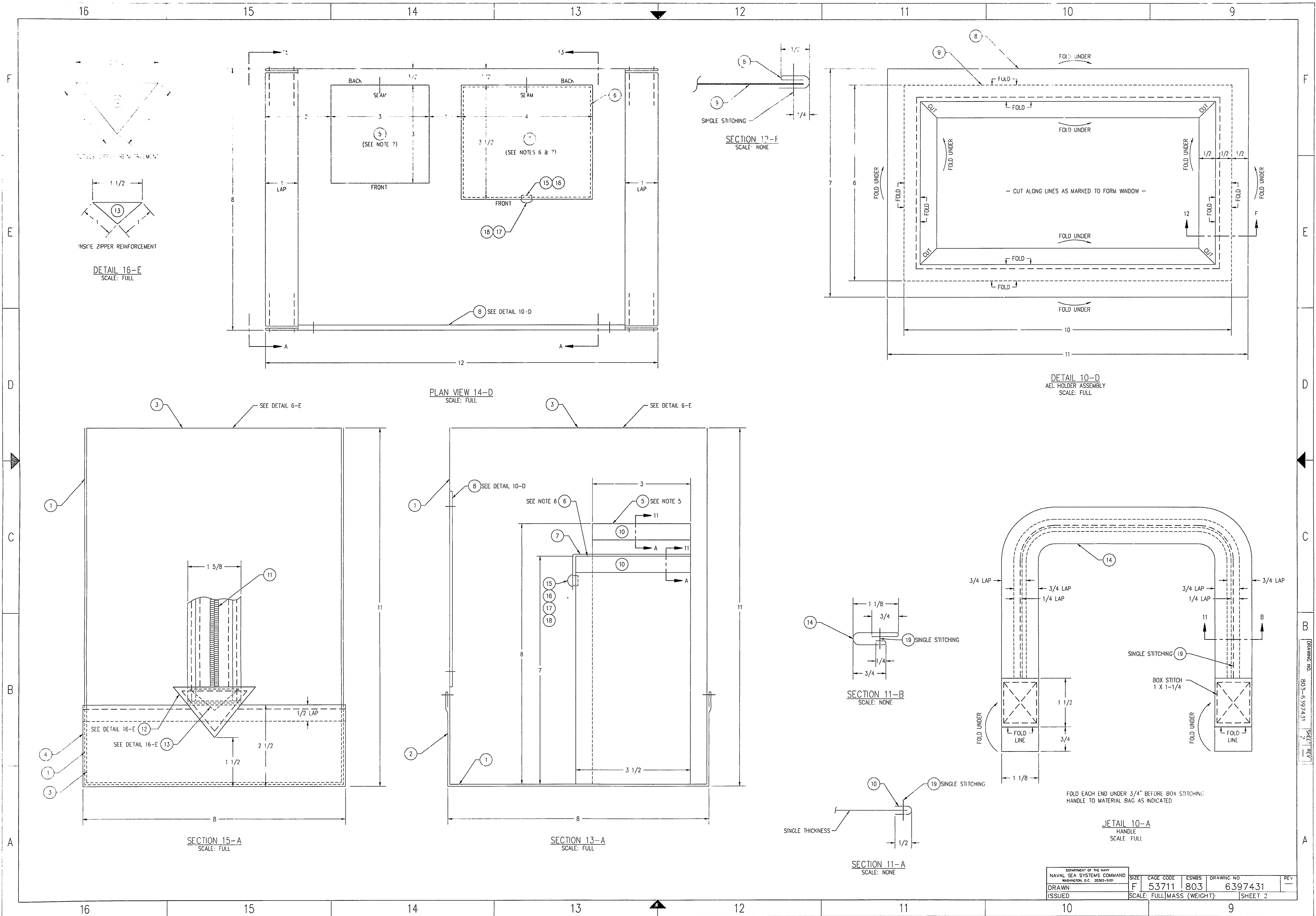
NAVAL SEA SYSTEMS COMMAND

BAG, SUBMARINE DAMAGE CONTROL MATERIAL

SCALE: 1/2 (MASS (WEIGHT))

6397431

SHEET 1 OF 2



DEPARTMENT OF THE NAVY NAVAL SEA SYSTEMS COMMAND WASHINGTON, D.C. 20382-5101		SIZE	CAGE CODE	ESWS	DRAWING NO	REV
DRAWN		F	53711	803	6397431	—
ISSUED		SCALE: FULL/MASS (WEIGHT)			SHEET 2	